




TETware *professional*



For organizations that are developing software and need to thoroughly test their products across multiple operating systems, TETware *professional* is a Test Execution Management System that takes care of the administration, reporting, and sequencing of the tests providing a single common user interface for all of the tests that you develop.

Features

TETware *professional* provides facilities to execute test cases in several ways:

- Non-distributed test cases on the local system
- Non-distributed test cases on one or more (up to 999) remote systems
- Distributed test cases with the parts of each test case executing simultaneously on either the local system and one or more remote systems, or entirely on two or more remote systems
- Single test case selected at random from a list of test cases
- Combinations of the above executing in parallel
- Sequences of the above executing a specified number of times, or until some time period has expired

TETware *professional* provides an easy-to-use multi-platform uniform test framework into which local, remote and distributed test suites can be incorporated. It is provided as a supported product for 32-bit Windows®, UNIX®, and Linux® operating systems.

This product allows test suites to share a common graphical user interface, promoting sharing of test suites both within an organization and between different organizations. Standardization of the test methodology and tools allows testing efforts to focus away from the harness and tools, increasing efficiency and productivity.

TETware *professional* is being used in a wide diversity of automated testing applications, ranging from: standards API conformance testing; network computer testing; performance and stress testing; and verification of secure electronic transactions; to distributed cross-platform applications.

Benefits

TETware *professional* reflects the need of both testers and test developers to have a simple, common interface that supports the basic functions that all tests need to perform (e.g., reporting, communication, and test sequencing).

Use of TETware *professional* can improve software quality while reducing testing intervals by up to 60 percent by making repeat and regression testing easier.

TETware *professional* enables test developers to spend their time writing tests, not designing testing frameworks.

TETware *professional* enables the development of tests that work well in conjunction with one another under a common graphical user interface.

TETware *professional* provides a uniform framework, into which both non-distributed and distributed tests can be incorporated.

Test suites can share a common interface allowing for as ease of portability.

Test developers don't need to be concerned about the "administrative" aspects of testing, and so are able to concentrate on the actual task of writing tests.

Testers only need to learn how to use a single, standard test harness.

Facilities

- Support for assertion-based testing and stress testing (see *Figure 1*).
- Builds, executes, and cleans-up test suites
- Test scenarios can be defined using a powerful scenario language
- Test parameters can be specified using a flexible configuration variable mechanism
- Configuration information and test results are recorded in a journal, and then may be written to a report or parsed to a database
- Support for standard POSIX result codes is built-in; user-defined results are also supported

Test Run

TETware *professional* uses the concept of a Test Run; this is a logical and conceptual unit that encompasses all the necessary data needed to ensure that a series of Test Cases can be executed successfully.

A Test Run contains a number of elements, some mandatory and others optional, that when combined enable the user to focus on the purpose behind the tests rather than getting the tests to execute.

Because the Test Run is a logical unit, it can be saved once and run many times. All the data relating to a given execution of tests is saved as a whole. This means that the user no longer has to worry about the management of configuration files and environment variables.

Versions

TETware *professional* may be built in two versions: one called Lite for supporting non-distributed testing on a single computer system; the other called Distributed, which is able to process both distributed and non-distributed test cases on the local system and on one or more remote systems.

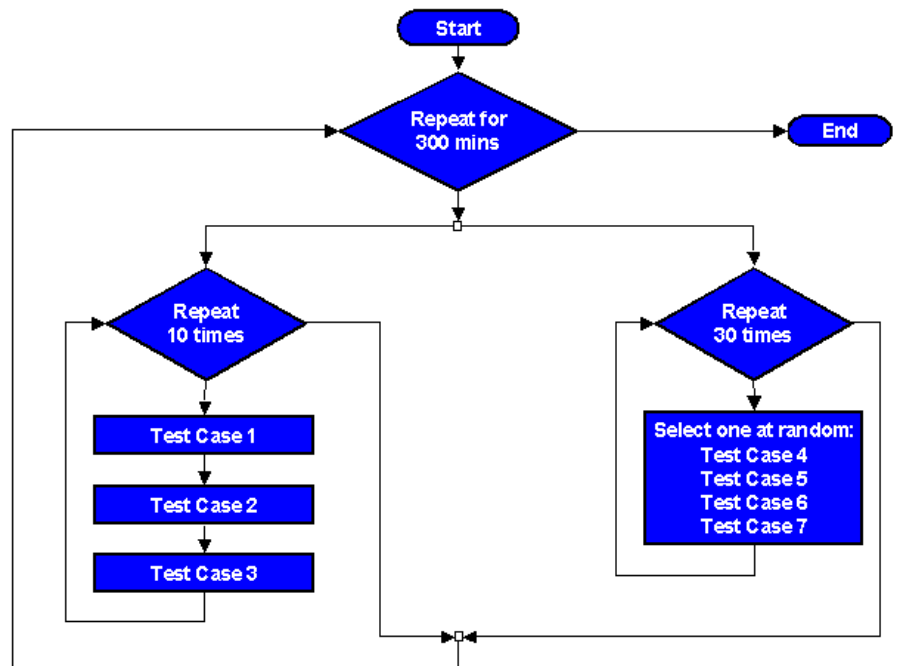


Figure 1: Example Stress Test Run

Support

The Open Group provides support and maintenance for TETware *professional* users including:

- priority bug reporting and repair
- provision of enhancements and maintenance releases as they become available.

In addition to which support customers receive a number of other benefits, including:

- access to on-line TETware *professional* information available on the world wide web and by FTP
- associate membership of The Open Group
- a discount on TETware *professional* Training Courses.

Consultancy

Open Group Consultants have extensive knowledge of the practical application of TETware *professional* for the development and implementation of test suites. Their expertise may be applied to help users achieve a fast start on their testing projects.

Training

The Open Group offers training for TETware *professional*. Training courses are modular and can be tailored to your organization's needs, ranging in length from three to five days.

The course contains a number of modules each consisting of lectures and practical exercises designed to reinforce the teaching.

In addition, an introductory module targeted at both engineers and engineering management is provided.

The instruction focuses on ensuring that the students are familiar with how TETware *professional* is best used and why the product has been constructed in a particular manner. In this way, students will be able to take best advantage of the design and the implementation of TETware *professional*.

If your organization is considering development of a TETware *professional* based test suite it is highly recommended that you attend The Open Group's training program, to learn how to make best use of TETware *professional*.

TETware *professional* provides full test execution management for both local and distributed testing via a Java[®] based GUI (Figure 3).

More advanced tasks are made easier with the use of wizards (Figure 2).

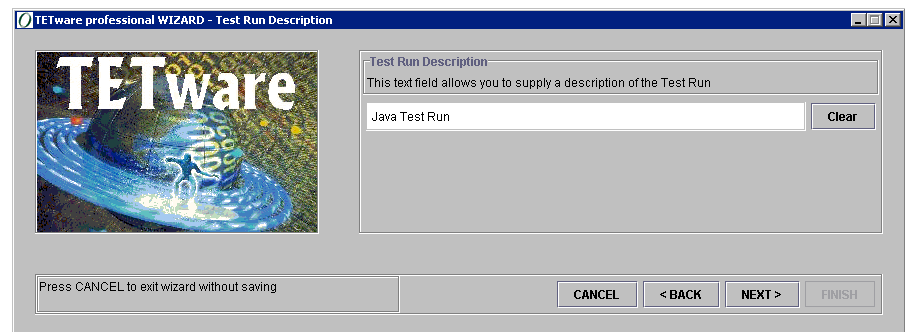


Figure 2: TETware *professional* Wizard

Construction

TETware *professional* is written as a wrapper around a core. The wrapper is written purely in Java 2 using the full capabilities of the Swing APIs.

The core is written in C, and requires a C compiler.

System Requirements

TETware *professional* requires POSIX.1 conformance. It is supported on UNIX operating systems, Linux and 32-bit Windows Systems.

TETware *professional* requires Java 2 (also known as JDK 1.2) or later.

The system requirements for Windows Systems are:

- Visual C++ 4.0 or later
- MKS Toolkit for Windows NT Version 4.4 or later

Language Support

Language bindings are available for the development of test cases in: C, C++, Java, Perl, Korn Shell, XPG3 Shell, and Tcl.

TETware

TETware is the command-line implementation of TETware *professional*. It offers all of the facilities of TETware *professional* that are not specifically linked to the Java wrapper, *e.g.*, it does not include the GUI or the database drivers.

TET

The Test Environment Toolkit (TET) offers the core facilities of TETware to UNIX and Linux users only. It is provided as an open source product under the terms of the Artistic License. It is an unsupported command-line product that is based on a previous release of TETware.

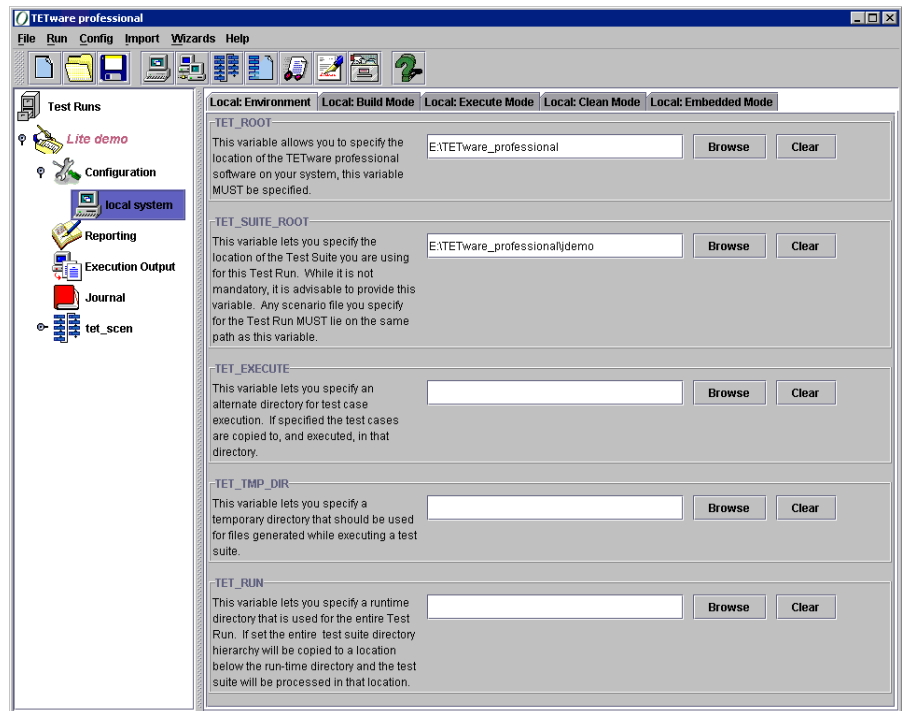


Figure 3: TETware *professional* GUI

For more information

Please contact the TETware team:

Tonya Henderson
Americas and Pacific Rim
+1 415 374 8285

t.henderson@opengroup.org

Alan Haffenden
Europe, Middle East, Africa
+44 (0) 118 902 3061

a.haffenden@opengroup.org